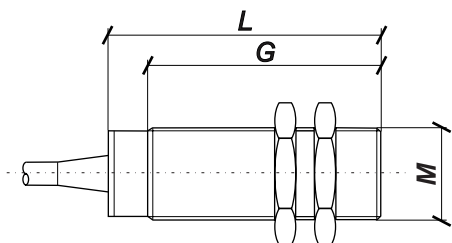


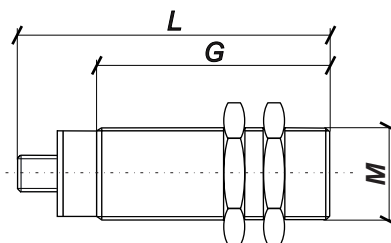
CYLINDRYCZNE I KOSTKOWE

Czujniki cylindryczne w obudowach gwintowanych: M4, M5, M8, M12, M18, M30

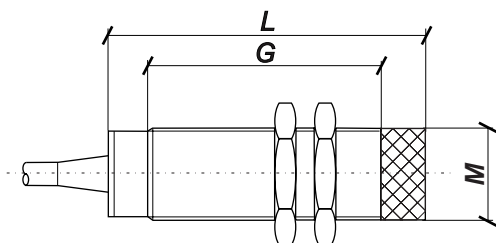
▶ A - z kablem, czoło wbudowane



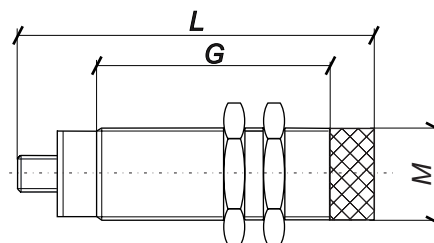
▶ B - z konektorem, czoło wbudowane



▶ C - z kablem czoło niewbudowane

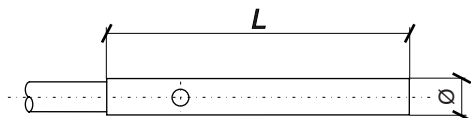


▶ D - z konektorem, czoło niewbudowane

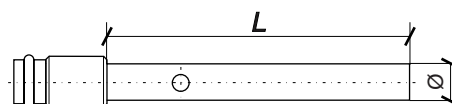


Czujniki cylindryczne w obudowach niegwintowanych $\varnothing 3$, $\varnothing 4$, $\varnothing 6,5$

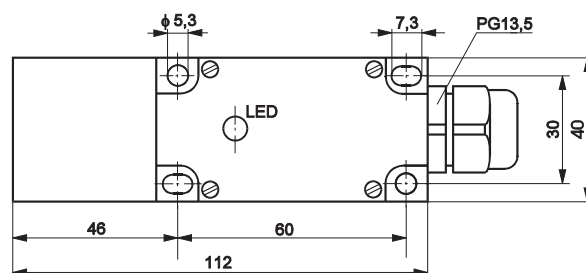
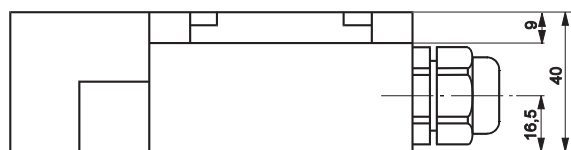
▶ E - z kablem



▶ F - z konektorem

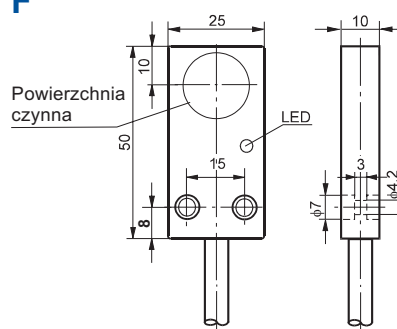


Obudowy czujników indukcyjnych typu X



▶ Powierzchnia czynna ustawiana w pięciu płaszczyznach, tzn. na czołowej lub bocznych ściankach obudowy czujnika

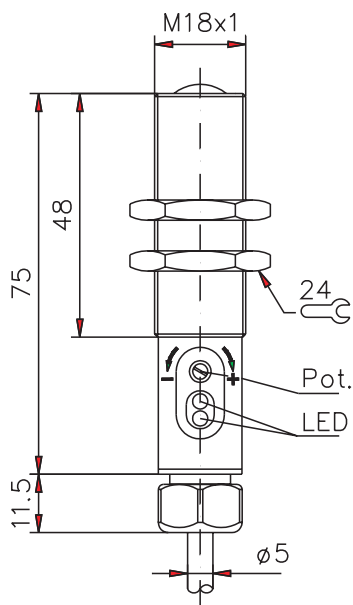
Obudowy czujników indukcyjnych typu F



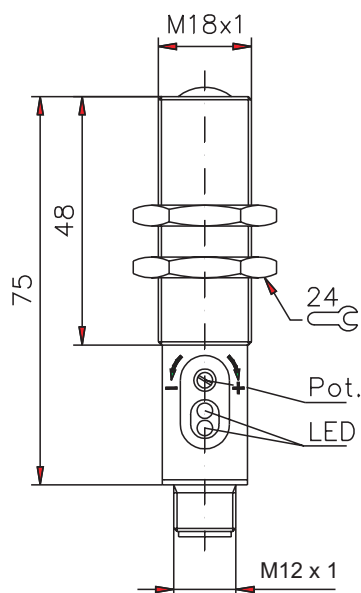


CYLINDRYCZNE PROSTE I KĄTOWE

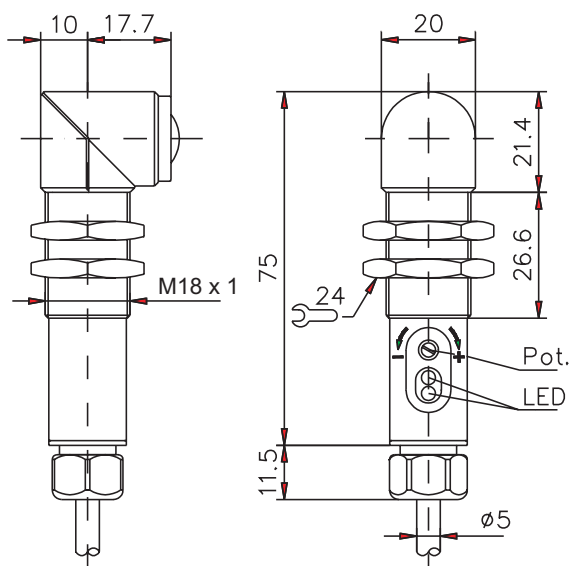
G - z kablem, prosta



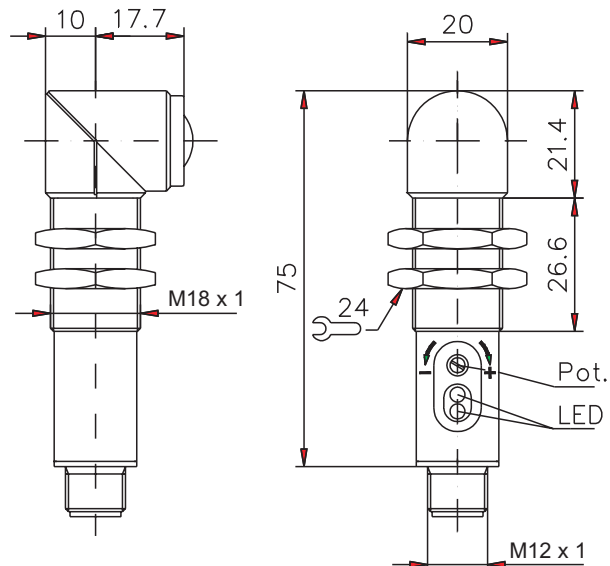
H - z konektorem, prosta



I - z kablem, kątowa

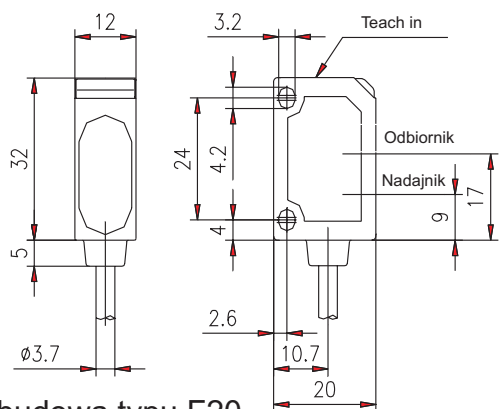


J - z konektorem, kątowa

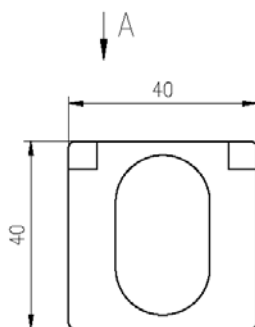




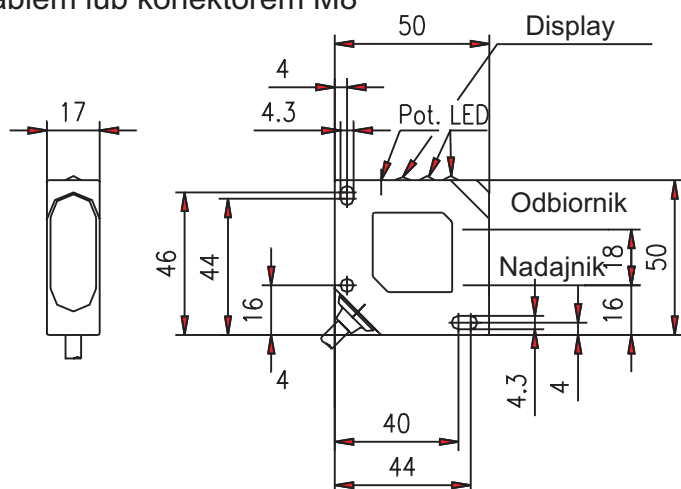
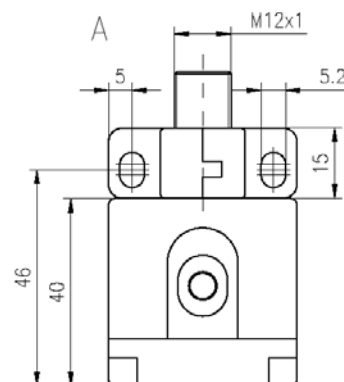
KOSTKOWE



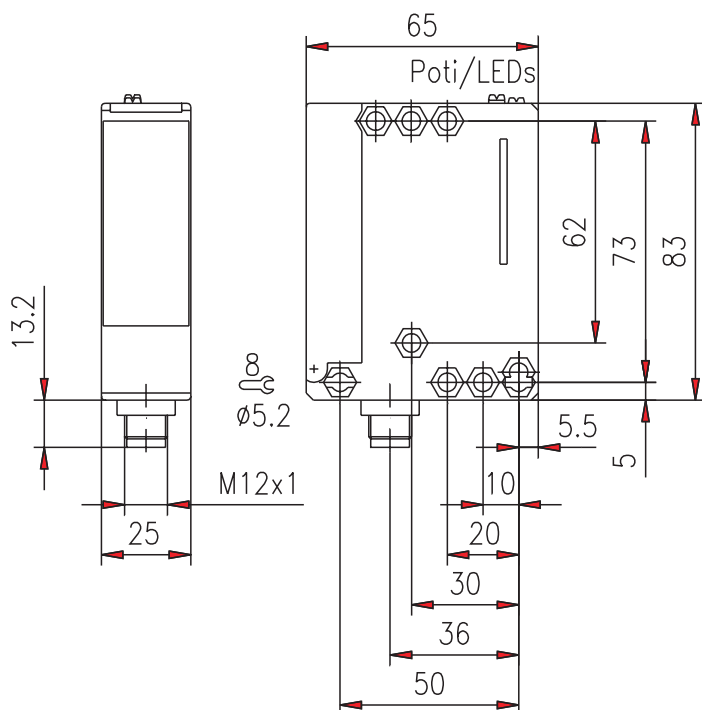
Obudowa typu F20
z kablem lub konektorem M8



Obudowa typu F40
z konektorem M12



Obudowa typu F50
z kablem lub konektorem M12

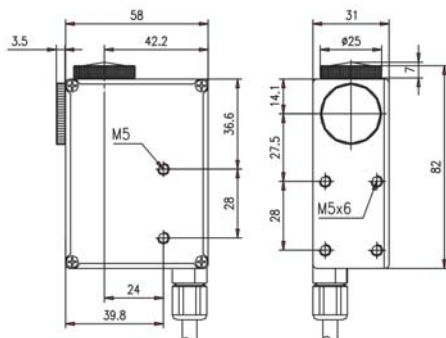


Obudowa typu F80
z kablem, konektorem M12
lub łączem PG11

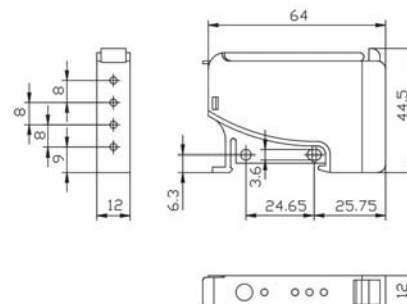


OBUDOWY TYPU: FT 82, FL 64, FZS, FGL, FG, FSEG

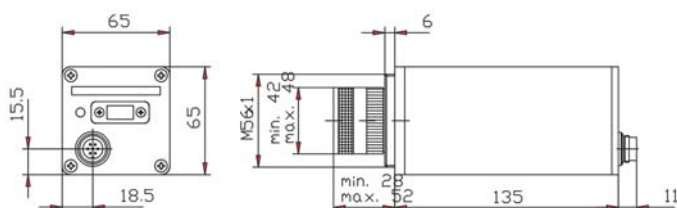
Obudowa czujnika FT 82 RG z kablem lub konektorem M12



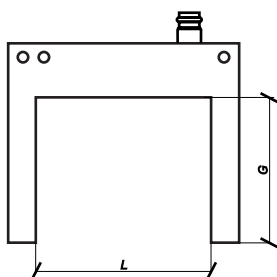
Obudowa czujnika FL 64 C, FL 64 RG, FL 64 R z konektorem M8



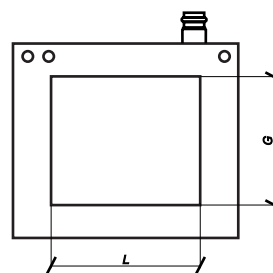
Obudowa kamery FZS 1024 U, FZS 1024 I



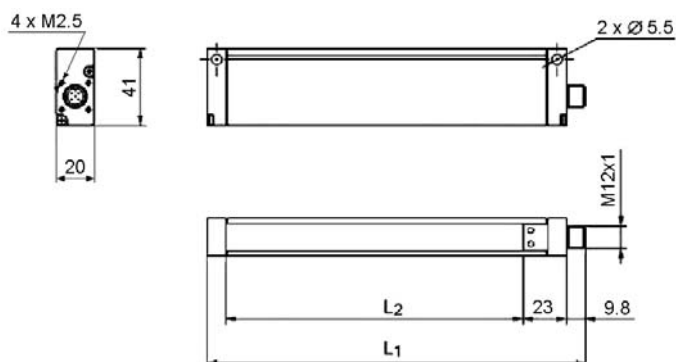
Obudowy czujników typu FGL



Obudowy czujników typu FG



Obudowy kurtyn typu FSEG

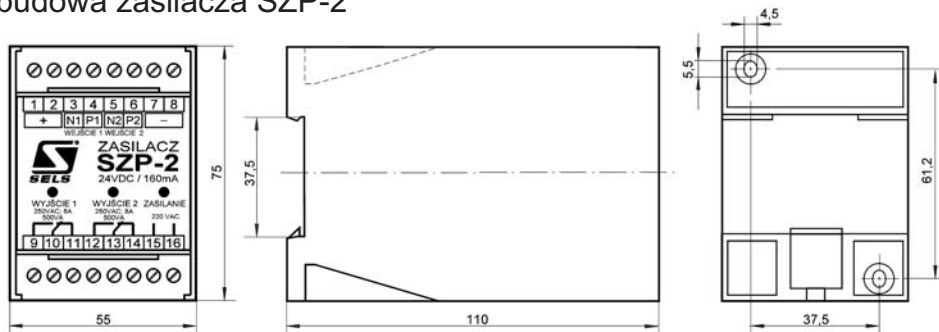


MODEL	L ₁ (mm)	L ₂ (mm)
FSEG 100	149,8	107
FSEG 150	199,8	157
FSEG 300	349,8	307

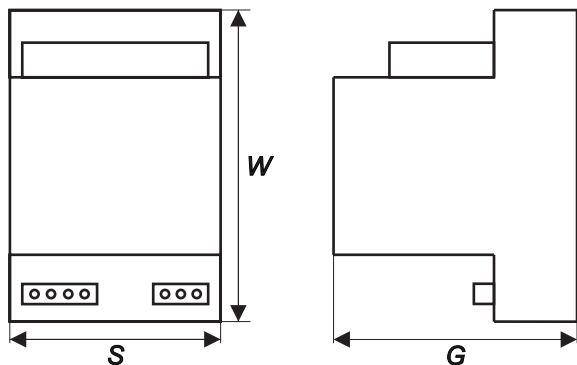


OBUDOWY ZASILACZY

Obudowa zasilacza SZP-2



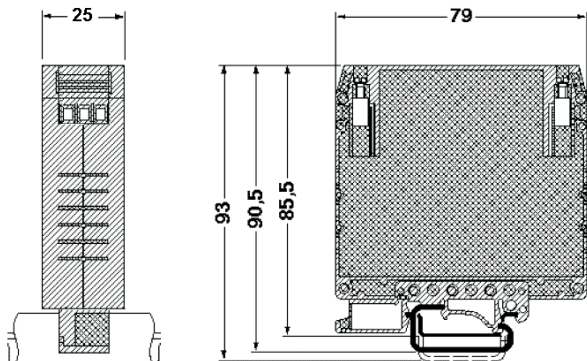
Obudowa zasilacza MC



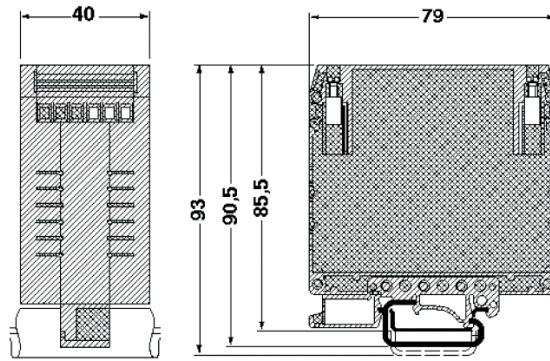
Modele zasilaczy	S	W	G
MC 60-...	80	125	98
MC 120-...	110	125	98
MC 220-...	180	125	98

Obudowa zasilacza CMC

Obudowa CMC...-1



Obudowa CMC...-2



Obudowa CMC...-3, CMC...- 4, CMC...- 5

Wartość A dla obudowy

3 - 107mm

4 - 141mm

5 - 180mm

